



License No. 800025015
 FL License # CMTL-0003
 CLIA No. 10D1094068

Certificate of Analysis

Compliance Test

BIOMD+
 PO BOX 892
 MARIETTA, GA 30061

Batch # 21BM1030103
 Batch Date: 2021-03-02
 Extracted From: Hemp

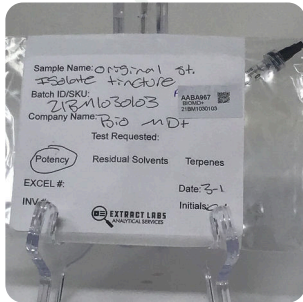
Test Reg State: Oregon

Production Date: 2021-03-02

Order # B10210302-120023
 Order Date: 2021-03-02
 Sample # AABA967

Sampling Date: 2021-03-04
 Lab Batch Date: 2021-03-04
 Completion Date: 2021-03-08

Initial Gross Weight: 3.638 g



Potency
 Tested

Product Image



Potency - 11

Specimen Weight: 84.480 mg

Analyte	Dilution (1:n)	LOD (%)	LOQ (%)	Result (mg/g)	(%)
CBD	1000.000	0.000054	0.001	35.500	3.550
CBDV	1000.000	0.000065	0.001	0.240	0.024
CBC	1000.000	0.000018	0.001	<LOQ	<LOQ
THCV	1000.000	0.000007	0.001	<LOQ	<LOQ
Delta-9 THC	1000.000	0.000013	0.001	<LOQ	<LOQ
Delta-8 THC	1000.000	0.000026	0.001	<LOQ	<LOQ
CBN	1000.000	0.000014	0.001	<LOQ	<LOQ
CBGA	1000.000	0.000008	0.001	<LOQ	<LOQ
CBG	1000.000	0.000248	0.001	<LOQ	<LOQ
CBDA	1000.000	0.000001	0.001	<LOQ	<LOQ
THCA-A	1000.000	0.000032	0.001	<LOQ	<LOQ

Tested
 (LCMS)



Potency Summary

Total THC None Detected	Total CBD 3.550%
Total CBG None Detected	Total CBN None Detected
Other Cannabinoids 0.024%	Total Cannabinoids 3.574%

Xueli Gao Lab Toxicologist
 Ph.D., DABT

Aixia Sun Lab Director/Principal Scientist
 D.H.Sc., M.Sc., B.Sc., MT (AAB)



Definitions and Abbreviations used in this report: *Total CBD = CBD + (CBD-A * 0.877), *Total THC = THCA-A * 0.877 + Delta 9 THC, *CBG Total = (CBGA * 0.877) + CBG, *CBN Total = (CBNA * 0.877) + CBN, *Other Cannabinoids Total = CBC + CBDV + THCV + THCV-A, *Total Detected Cannabinoids = CBD Total + CBG Total + CBN Total + THC Total + CBC + CBDV + THCV + THCV-A, *Analyte Details above show the Dry Weight Concentrations unless specified as 12% moisture concentration. (mg/ml) = Milligrams per Milliliter, LOQ = Limit of Quantitation, LOD = Limit of Detection, Dilution = Dilution Factor (ppb) = Parts per Billion, (%) = Percent, (cfu/g) = Colony Forming Unit per Gram (cfu/g) = Colony Forming Unit per Gram, LOD = Limit of Detection, (µg/g) = Microgram per Gram (ppm) = Parts per Million, (ppm) = (µg/g), (aw) = aw (area ratio) = Area Ratio, (mg/Kg) = Milligram per Kilogram, *Measurement of Uncertainty = +/- 5%



This report shall not be reproduced, without written approval, from ACS Laboratory. The results of this report relate only to the material or product analyzed. Test results are confidential unless explicitly waived otherwise. Accredited by a third-party accrediting body as a competent testing laboratory pursuant to ISO/IEC 17025 of the International Organization for Standardization.

